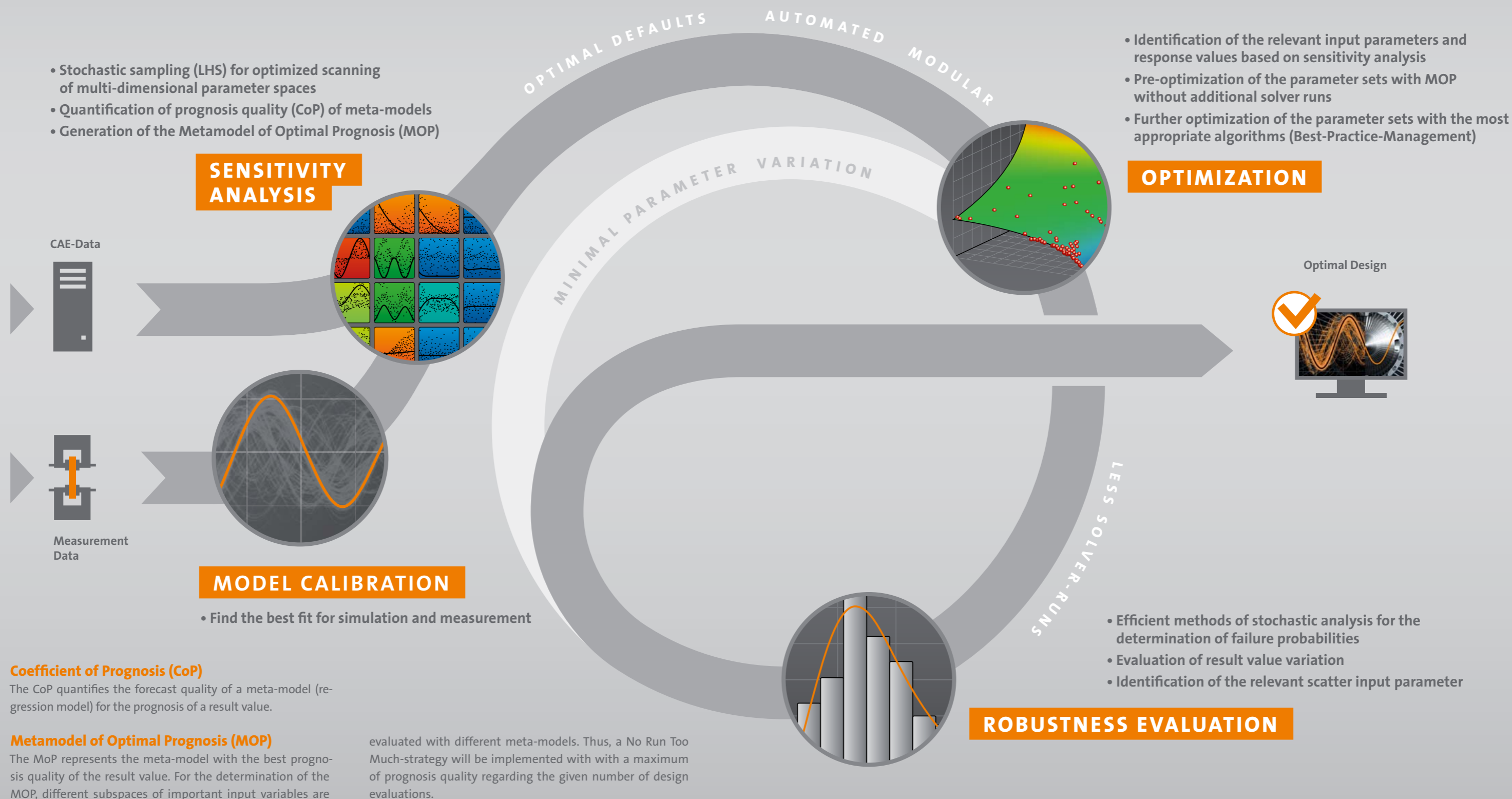


OPTISLANG – GENERAL PURPOSE TOOL FOR VARIATION ANALYSIS

Sensitivity analysis, optimization and robustness evaluation based on multiple designs, measurement or observation points with a minimum of user input and solver runs for an effective virtual product development.



Coefficient of Prognosis (CoP)

The CoP quantifies the forecast quality of a meta-model (regression model) for the prognosis of a result value.

Metamodel of Optimal Prognosis (MOP)

The MoP represents the meta-model with the best prognosis quality of the result value. For the determination of the MOP, different subspaces of important input variables are

evaluated with different meta-models. Thus, a No Run Too Much-strategy will be implemented with with a maximum of prognosis quality regarding the given number of design evaluations.